



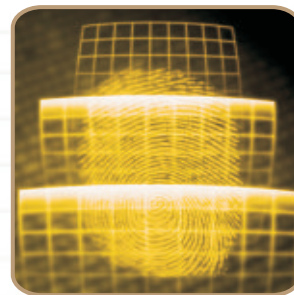
SPECTRA



BioStamp



www.spectra-vision.com



Affordable Biometric Security

FingerXs



INSTAID



ezCANTEEN



BioStamp



PAYPOINT



Features

- ⊗ Affordable solution for biometric access security
- ⊗ Most accurate and reliable fingerprint scanner
- ⊗ Elegant design with compact dimensions, suitable for installations on a door frame
- ⊗ Industry standard Weigand interface for easy interface to any access controller

Template Manager

- ⊗ BioStamp comes with fingerprint database management software for easy enrollment and transfer of templates
- ⊗ Auto scan of all the units connected over network
- ⊗ Uses MS Access database to store the centralized information of all the registered fingerprints
- ⊗ The software supports both RS485 and Wireless interface for template transfers
- ⊗ The templates can either be registered on BioStamp directly or through a USB scanner and can later on be transferred to BioStamp unit.
- ⊗ Configuration of various fingerprint sensor parameters like security level, image quality etc
- ⊗ Configure Weigand parameters like no of bits, pulse interval, pulse width etc
- ⊗ API for third party access management software

Accessories



Enrollment Sensor

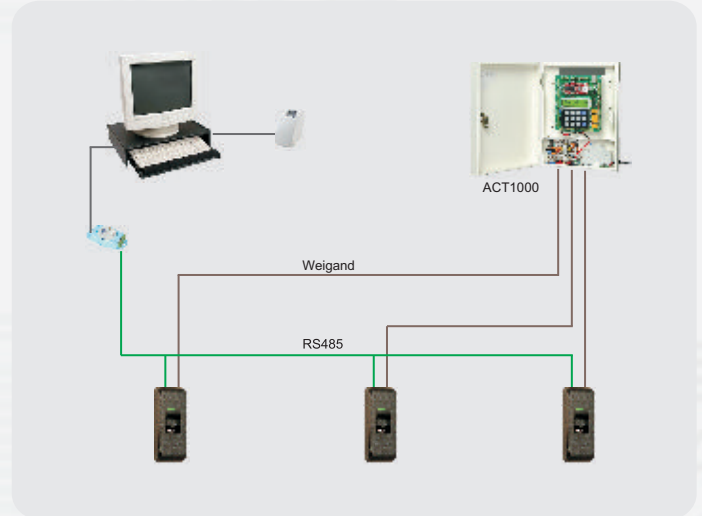


USB Wireless Adaptor



RS232 Interface Converter

Configuration



Specifications :

- ⊗ Optical Fingerprint scanner with 500 dpi resolution
- ⊗ Registration Time <1 Sec , 1:1 Match < 1 sec, 1:N match <1 sec for 1000 templates
- ⊗ Equal Error Rate < 0.1%
- ⊗ Capacity to store 1900 fingerprint templates (950 users)
- ⊗ Built in RFID reader for different authentication modes like only Finger , only Card, Card + Finger
- ⊗ Card reader options - HID iClass, Mifare, HID Prox & EM reader
- ⊗ Configurable Weigand output, connects seamlessly to most access controllers
- ⊗ Support of template on card mode with contactless smart card
- ⊗ Support of Command cards for easy user management
- ⊗ Multi color LED indication for successful match
- ⊗ Programmable Buzzer & LED control from controller
- ⊗ RS485 / Wireless interface for fingerprint registration
- ⊗ Operating voltage 12VDC
- ⊗ Dimensions = 5.3 cm (L) x 15.5 cm (H) x 3.8 cm(D)

mifare



Spectra Technovision (India) Pvt. Ltd.

Registered Office: 308, Earth Complex, near Seema Hall, 100 Ft. Road, Satellite, Ahmedabad - 380015 (Gujarat) INDIA.
Phone: +91 79 2693 1601, 2693 1608, 2693 0979 | **Fax:** +91 79 2693 0979 | **Email:** sales@spectra-vision.com