

DAC02 & DAC04 IPW



Networked Intelligent Controllers

The DAC02 and DAC04 access control and time and attendance panels set the industry standard for performance, reliability, flexibility and cost effectiveness. They are designed and manufactured for use with the SACS™ Solus Access Control System Software, Based on a Dual Processing platform, each IPW panel contains 512 KB & Expandable up to 16 MB of battery backed-up RAM allowing high speed transactions and support for up to 2,50,000 cardholders (With Extended Memory).

The DAC02 provides connection for up to two readers, two locks, and two egress buttons (REX) and DAC04 provides connection for up to four readers, four locks, and four egress buttons (REX). On-board programmable relays and supervised alarm inputs are provided on each panel.

The DAC 02 & 04 IPW has built-in Web browser Interface that allows remote maintenance & management of controllers in a network or even on Internet. Remote management include initial configuration, firmware upgrade and even log retrieval. DAC 02 & 04 IPW also allow for connection through RS-422, RS-232 and dial-up. This topology provides the installation flexibility required by a variety of facilities.



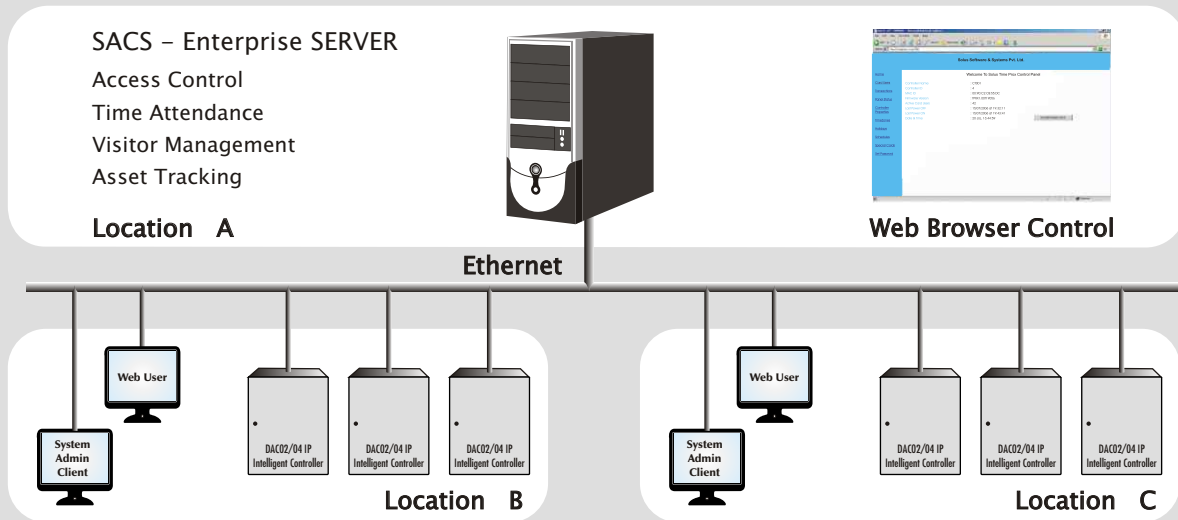
DAC02 & 04 IPW - B



DAC02 & 04 IPW - RM



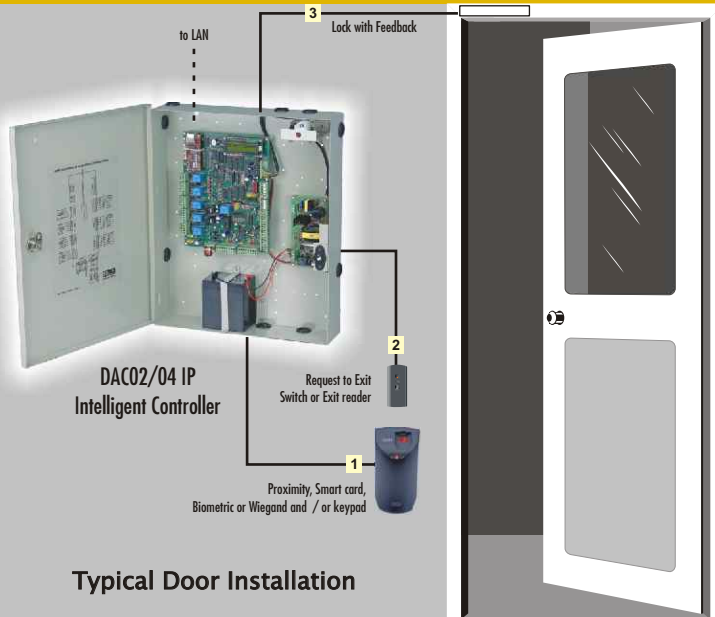
System Architecture



Features & Benefits

- Directly supports two (DAC02) or four (DAC04) readers. Readers may consist of Wiegand, Proximity, Contactless Smart card, Biometric technologies, keypad, or combined reader/keypad; Keypads may be used for controlled entry, PIN, reasons, masking and unmasking of alarm devices and activation of a duress alarm.
- Supports variable card formats to enable the use of a facility's existing cards. Also supports multiple site or facility codes.
- Dual processor assures high speed downloads, fast access and real-time alarm reporting. 512KB expandable up to 16 MB memory may support up to 2,50,000 (with expanded memory) cardholder records in each panel.
- Includes supervised inputs for door contacts, motion detectors, glass break sensors and other alarm devices as well as request-to-exit devices and electric door hardware. Also provides programmable auxiliary relays (outputs) for interface with other building systems.
- On Board 10 Base T LAN connection is standard. Also supports RS-422 connection for multi dropping additional controllers using a single address. Instant Access ensures that there is no waiting for access during the download of information of the field panels. RS-422 (4 wire) and RS-232 connectivity is standard.
- Local Anti-Pass back feature is a method of preventing an ID device from gaining access to an area more than once, without it first being used to exit from that area. Optional dial-up allows field panels to work off-line. Dial up works for remote database download, historical activity and alarm reporting.
- Operating firmware is stored in FLASH memory for easy updates operating from the PC remotely, no need to go to each panel and replace the chips. Updates can occur over LAN / WAN centrally. (IPW Series)
- Slip hinge metal enclosure with tamper switch provides ease of installation and service as well as security. (BAT Models)
- Built in SMPS with battery charger maintains the DAC board and direct-connected readers and lock in the event of a power failure. (BAT Models)
- Connection diagram overlay allows for easier wiring and installation as well as viewing of system diagnostic LEDs.

System Description



Cabling Information

| Cable# | Description | Cable | Max. Distance |
|--------|-------------|---|---------------|
| 1 | CTR to RDR | 22 AWG 8 Core Shielded (SAC-Solus Access Control Cable Recommended) | 150 mtr. |
| 2 | CTR to REX | 18 AWG 4 Core Shielded (SAC-Solus Access Control Cable Recommended) | 150 mtr. |
| 3 | CTR to LOCK | 18 AWG 4 Core Shielded (SAC-Solus Access Control Cable Recommended) | 150 mtr. |
| 4 | CTR to CTR | 24 AWG 4 Core Shielded (SAC-Solus Access Control Cable Recommended) | 1200 mtr. |
| 5 | CTR to LAN | CAT 5/CAT 6 | 100 mtr. |

Networked Intelligent Controllers

Field panels are the cores of any access control system. When used with SACS™ Software, RISC processor based DAC02 & 04 IPW Panels set a high industry standard for access control and reliability. They are designed to operate with the server using Industry - standard LAN/WAN connection or on RS-422, RS-232.

All access decisions and alarm monitoring activity are performed locally at the DAC02 and DAC04 panel based on parameters that were downloaded from the server - thus minimizing network traffic, and minimizing the time from presenting a card to completion of the access transaction.

Up to 1024 DAC02s or DAC04 IPW Series panels may be connected to a single SACS™ Enterprise Server. Each unit is mounted in a sturdy sheet metal enclosure with a removable hinged door, a keyed lock and a cabinet tamper switch. It is also supplied with a plug-in SMPS, which provides power to the unit. A built-in battery charger is provided along with a set of batteries to support the unit's operation during a power failure. These backup batteries (not included) supply power to the unit, readers and to locks. (BAT Models)

Each DAC IPW panel comes with Flash RAM that supports a standard 25,000 cardholder database including access privileges, time schedules, holiday schedules, security areas, access groups and more.

The memory is dynamically allocated so that any memory not used for storing cardholder records is available to store events and transactions. Even with full use of the cardholder record memory, a minimum of 15,000 transactions may be stored for subsequent upload to the server where it can be archived for future retrieval and report generation.

Ordering Information

Specifications

- Card Holders 25,000 *
- Transactions 15,000 **
- Inputs 12
- Outputs 8
- Memory 512 KB
- Flash 512 KB
- Processor RISC

Device Support

| | Reader | Lock | Egress |
|----------|--------|------|--------|
| • DAC 02 | 2 | 2 | 2 |
| • DAC 04 | 4 | 4 | 4 |

Environmental

- Maximum : 65 °C (150 °F)
- Minimum : 0 °C (32 °F)
- Humidity : 0 to 95% relative

Power

- Input 230VAC / 12VDC Approx. 40VA

Dimensions

| | Standard | BAT | Rack |
|----------|----------|---------|---------|
| • Height | 370 mm | 450 mm | 2U |
| • Width | 250 mm | 370 mm | 482 mm |
| • Depth | 55 mm | 90 mm | 370 mm |
| • Weight | 2.5 k.g | 6.5 k.g | 4.5 k.g |

| Part Number | Product Description |
|-------------------|--|
| DAC 02 – IPW | Two Reader Control panel with PS Cabinet, Power supply & Onboard TCP/IP |
| DAC 04 – IPW | Four Reader Control panel with PS Cabinet Power supply & Onboard TCP/IP |
| DAC 02 – IPW – B | Two Reader Control panel with BAT Cabinet, Power supply, Charger & Onboard TCP/IP Communication |
| DAC 04 – IPW – B | Four Reader Control panel with BAT Cabinet Power supply, Charger & Onboard TCP/IP Communication |
| DAC 02 – IPW – RM | Two Reader Control panel with 19" Rack Mount Cabinet, Power supply & Onboard TCP/IP Communication |
| DAC 04 – IPW – RM | Four Reader Control panel with 19" Rack Mount Cabinet, Power supply & Onboard TCP/IP Communication |
| Accessories | |
| SDC 01 | RS-232 to RS422 Data Converter |
| SDC 02 | RS-232 to LAN Data Converter |
| SPS 01 | 12 V , 4Amp Power Supply |
| SPP 01 | 12V, 4Amp Power Supply with Charger (Battery Not Included) |
| SEML – 01 | Electro magnetic Lock 600 LBS |
| SEML – 02 | Electro magnetic Lock 600 LBS –with Door Feed back |
| SAC – 150 | Solus Access Control Cable 7C Shielded – 150 mtrs |
| SAC – 75 | Solus Access Control Cable 7C Shielded – 75 mtrs |

Note

- Mention BAT with every Model for Power back up option (up to 3 hrs)
Example : DAC04 – IP – BAT
- Batteries are not part of standard supply

* Expandable up to 2,50,000

** Expandable up to 1,00,000



Solus Security Systems Pvt. Ltd.

307, Shivam Chambers, Next to Sahara,
S. V. Road, Goregaon (W) Mumbai 400104
Tel: +91 22 6769 6666 Fax: +91 22 6769 6699
Email: sales@solus.co.in www.solus.co.in